



# ABLE DOOR SERVICES (NSW) PTY. LTD.

107 LONG STREET, SMITHFIELD, NSW. 2164

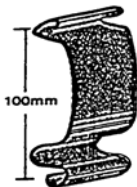
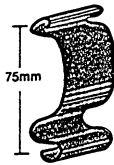
PHONE: (02) 9757 1877 FAX: (02) 9757 1652

## STEEL SHUTTERS

### SLAT PROFILE

Computer Designed and  
Physically Tested  
Hi-Strength N-75mm Slat  
Hi-Strength N-100mm Slat

MATERIAL THICKNESS mm	RECOMMENDED MAXIMUM OPENINGS	
	Height mm	Width mm
0.6	5000	5000
0.8	6000	7000
1.0	7000	8000



Opening Height mm	A mm	B mm	C	D
2500	400	530	75mm Guide C=250 100mm Guide C=275	Chain Operated =205
3000				
3500				
4000				
4500				
5000				
5500				
6000				
6500				
7000				

### SPECIFICATIONS

**Curtain** shall be assembled from type N-75 or N-100 slats, which shall be roll-formed from galvanised steel. Nylon end clips fitted to alternate slats shall secure the slats laterally.

**Bottom Rail** shall be fabricated from a steel tee or an angle section. These are designed to re-enforce the bottom of the shutter curtain and provide fixing for locks and other fittings.

**Support Brackets** shall be fabricated from M.S plate and shall have provision for fixing to brickwork or steelwork as required.

**Channel Guides** shall be cold rolled steel channel sections with suitable provision for fixing. Where wind locks are required fabricated guides are available.

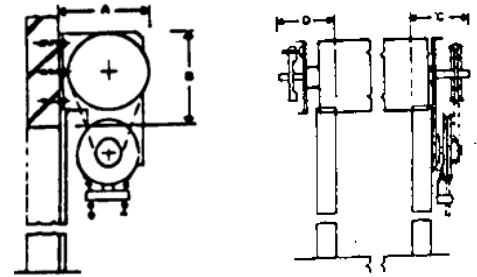
**Operation** shall be by means of a galvanised hand chain through a sprocket chain drive of suitable reduction ratio ensuring ease of operation or by means of an electric motor unit giving operation at the touch of a button.

**Electric Motor Units** generally shall comprise of a 3 phase motor either .75 kW/h (1hp) or 1.5 kW/h (1½hp) driving through a reduction gearbox and a reversing contactor with overload protection and built-in push button stations shall be provided. A full selection of electronic controls for automatic operation is available.

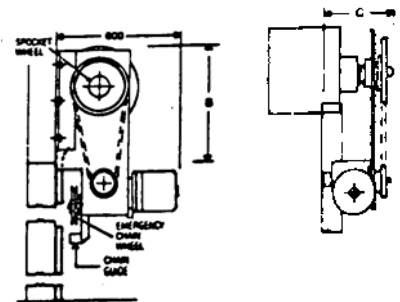
**Finish** The shutter curtain is supplied with a galvanised finish and all other components are given a priming coat of zinc chromate. Polyurethane colour finishes are available in a wide range of colours and shades to suit your requirements.

### FIXING DETAILS

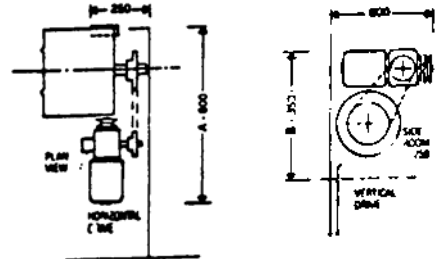
#### Chain Operation



#### Standard Electric Operation



**Motor Units** may also be placed horizontally behind the shutter or vertically above the shutter to suit site requirements.



#### Side Guide Details

75mm Guide

100mm Guide

